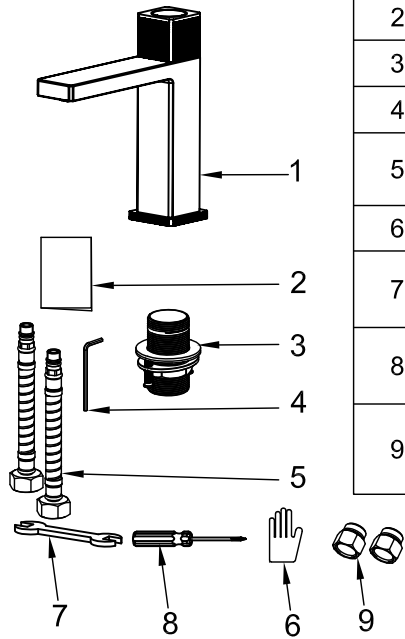
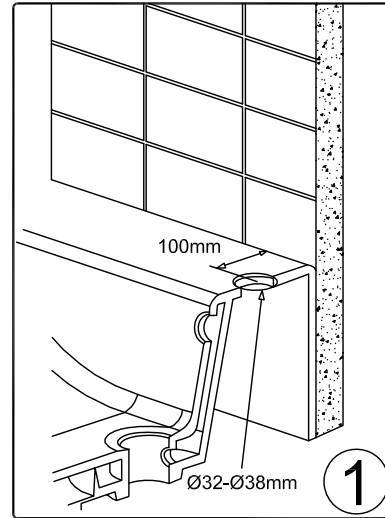


Installation List

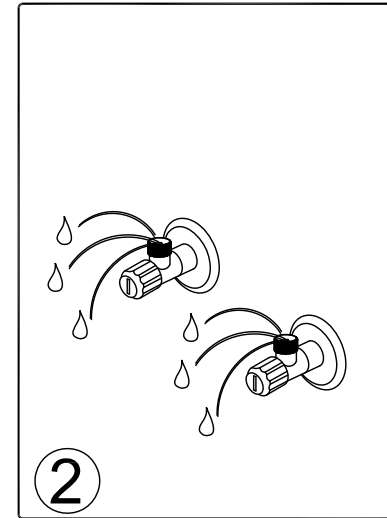


S/N	Description	Nos
1	Faucet	1
2	Instruction	1
3	Fasten parts	1
4	2.5mm Allen key	1
5	Hot & cold inlet hose	1
6	Gloves	1
7	Spanner (Self-prepared)	1
8	Screwdriver (Self-prepared)	1
9	check valve connector	2

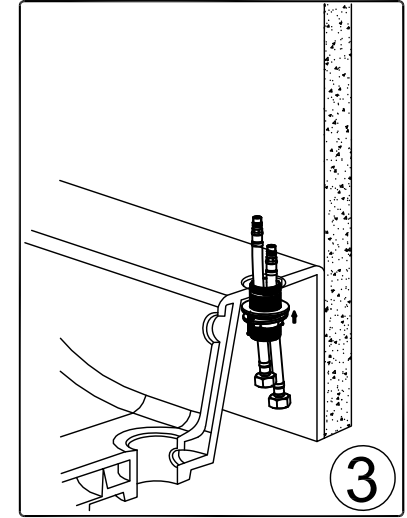
BASIN / KITCHEN MIXER



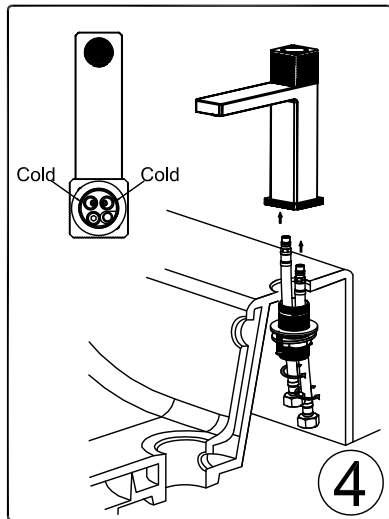
1. Make a hole on the counter at $\Phi 32 - \Phi 38\text{mm}$



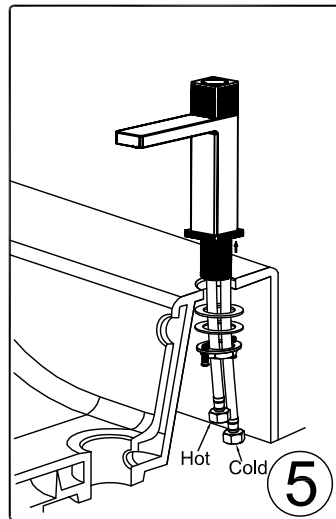
2. Flush any contaminants in supply lines for 30-60 seconds until water is clean.



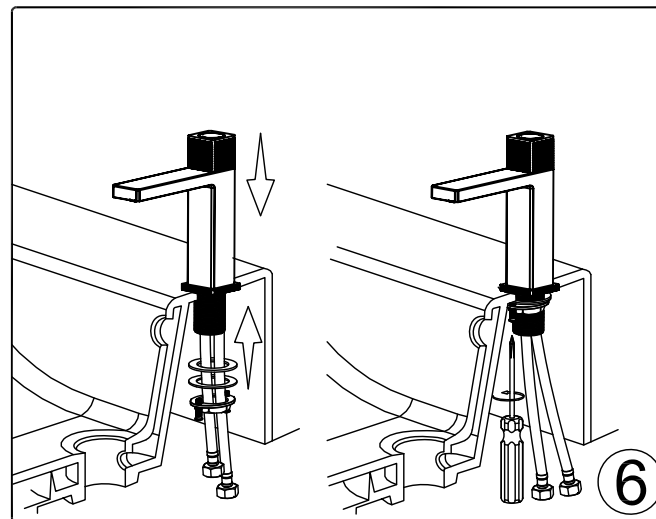
3. Pass all the fasten parts (3) in correct directions through the hot & cold inlet hose (5), then make these hose (3) go through the hole from down to top counter.



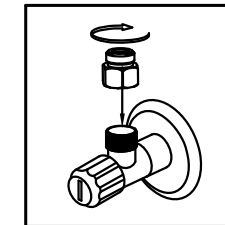
4. Fix the two hot & cold inlet hose (5) to the faucet.



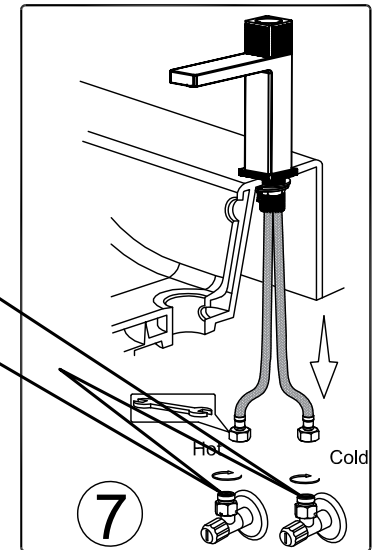
5. screw out the thread pipe from the fasten parts (3), and then tighten the thread pipes to the faucet.



6. Fasten the screws/nut from (3) with screwdriver.



MAKE SURE the Check valve connector is installed to the angle valve first before the angle valves connect with the Inlet flexible hose.



7. Install the Check valve connector(9) to angle valves linked with Hot & Cold water supply pipe, then fasten it by spanner to the other end of the Hot & Cold Inlet flexible hose(5).